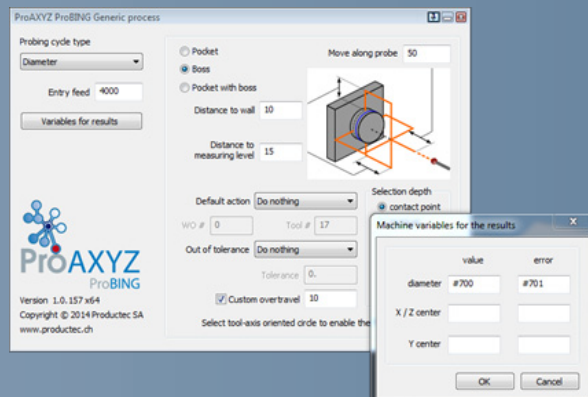
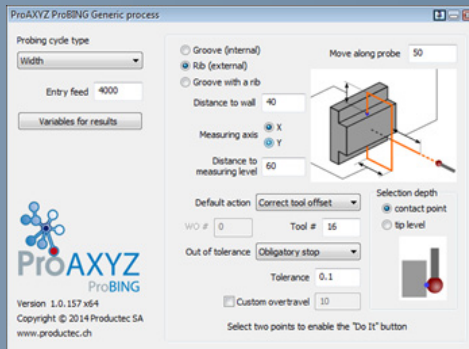
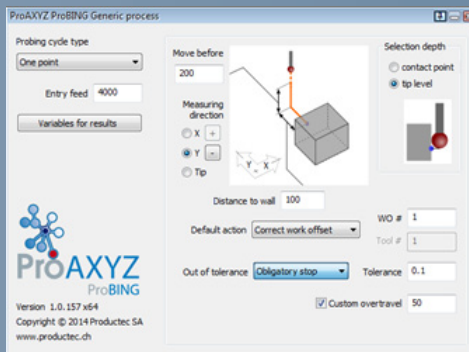
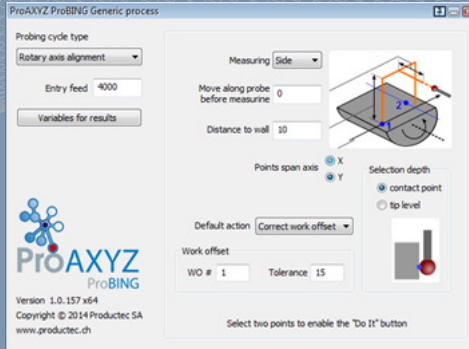


Probing solution of Productec



ProXYZ ProBING is a software that enables creating, simulating and defining corrective actions of probing operations directly in GibbsCAM.

The following functions are available:

- Referencing the axes (X,Y,Z)
- Dimensional probing (length / width)
- Diameter probing (on 4 points)
- Alignment of rotary axes

Corrective actions such as correcting the workpiece home position (X,Y,Z,C), the length compensation or the tool radius compensation or a machine stop can be defined, allowing the measurements made to be applied during the production process.

The software functions on machines fitted with probe cycles of the following CNC systems:

- CNCs fitted with the Renishaw Inspection Plus cycles. For example, most of the FANUC, Mazak, Haas, Mitsubishi etc. CNC systems (For more information, refer to the machine designer and the documentation of Renishaw Inspection plus)
- machines with Sinumerik 840D controllers
- machines with Heidenhain iTNC controllers

